

The Premier Closure System in Pharmaceutical Processing

ILC Dover pioneered flexible containment for the pharmaceutical industry and continues to innovate processes for better performance. We invented the original crimping system and now we have created the CrimpLoc™ System. This NEW system is the next generation to provide high containment and a secure closure when using the DoverPac® Continuous Liner, and other ArmorFlex® film solutions.

- Less hand force and more ergonomic
- One Tool for all Crimp Sizes
- Uses the same Crimps as the existing ILC Dover Crimp System
- Light weight

Key Factors to Consider when Selecting a Closure:

- Containment
- Quality
- Ergonomics / Safety
- No plastic shards from separation cut
- Validation
- Operator Ease of Use

The CrimpLoc™ System is a complete kit to provide the secure closure for ArmorFlex® film packages. Current users can upgrade to the CrimpLoc™ and realize the benefits of the new design. New kits are available including the CrimpLoc™ tool, Cutting Tool, and Crimps.

ILC Dover's crimps are formulated with FDA compliant raw materials and contain no ingredients of animal origin.

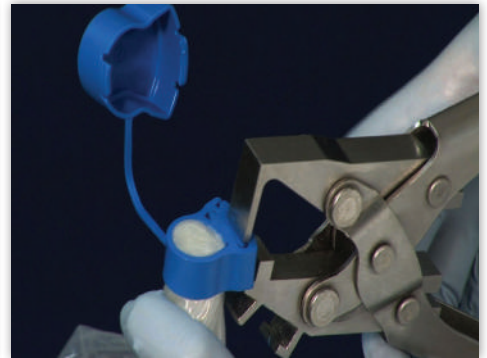
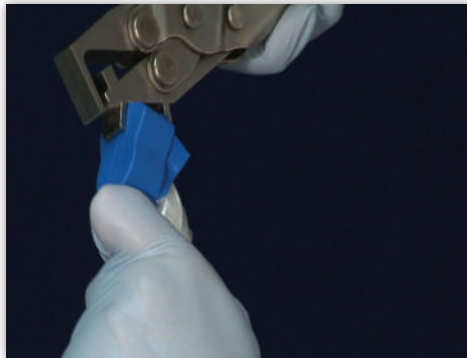
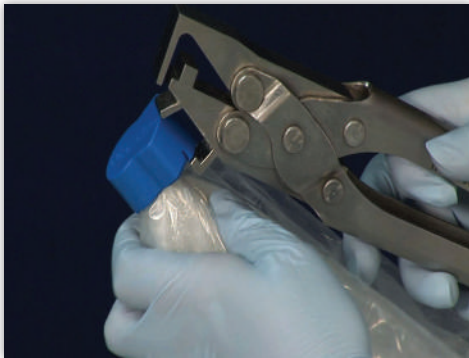
One CrimpLoc™ tool is needed for the range of ArmorFlex® closures offered by ILC Dover:

ArmorFlex® Size	Crimp Designation
23" Diameter Blue	Blue
14" Diameter Red	Red
4" Diameter Yellow	Yellow



CrimpLoc™ Kit

Crimp Removal Tool in Action



The crimp is removed with no breakage and no risk of plastic shards

ILC Dover has been *"creating what's next"* for over 60 years.

To *"create what's next"* ILC Dover listens to its customers. Our skilled engineering staff, building on years of experience with NASA, military, and commercial customers, translates those needs into high performance products. We look forward to hearing from you so we can continue to *"create what's next"*.



www.doverpac.com

One Moonwalker Road • Frederica, Delaware • USA 19946-2080

email customer_service@ilcdover.com | phone 302.335.3911 or 800.631.9567 (US) • fax 302.335.1320



MKT-0072 Rev C